



Application

- Can be used to transfer clean water or other liquids similar to water in physical and chemical properties
- Suitable for small living water supply, automatic water sprinkler system, small air conditioner system or supporting equipment etc.

Pump

- Special anti-rust treatment for cast iron pump body and support
- Anti-block system for impeller
- Brass impeller
- AISI 304 shaft
- Max. liquid temperature: +85°C
- Max. suction: +8 m

Motor

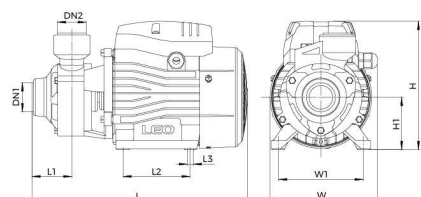
- Low noise&Long life bearing
- Motor with copper winding
- Built-in thermal protector for single phase motor
- Insulation class: F
- Enclosures class: IPX4
- Max. ambient temperature: +50°C

Identification Codes

A	P	m	75	H
				High head
				Power (X10 W)
				Single Phase Motor
				(Omitted for three-phase motor)
				Peripheral Pump
				LEO Product Style

Technical Data

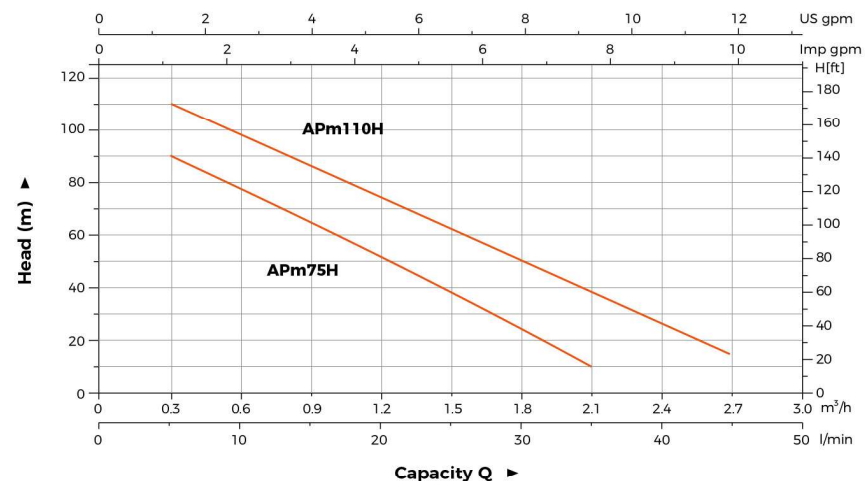
Model	Power		Q(m³/h) Q(l/min)	0	0.3	0.6	0.9	1.2	1.5	1.8	2.1	2.4	2.7	3.0
	kW	HP		0	5	10	15	20	25	30	35	40	45	50
APm75H	0.75	1.0	H (m)	105	85	70	60	40	30	20	10	-	-	-
APm110H	1.1	1.5		125	110	100	85	70	60	40	32	25	15	-



Dimension

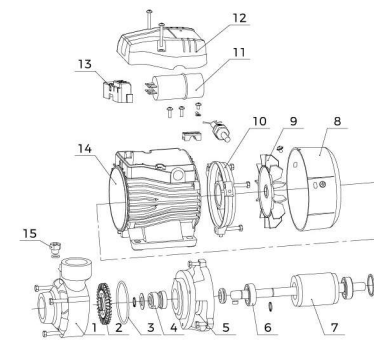
Model	DN1	DN2	L (mm)	W (mm)	H (mm)	L1 (mm)	L2 (mm)	L3 (mm)	W1 (mm)	H1 (mm)
APm75H	3/4"	3/4"	299	147	183	52.5	90	8.5	112	73
APm110H	1"	1"	338	165	210	56	100	9	125	86

Hydraulic Performance Curves



Material Table

No.	Part	Material
1	Pump body	HT200
2	Impeller	HPb59-1
3	O-ring	NBR
4	Mechanical seal	
5	Pump support	HT200
6	Bearing	
7	Rotor	
8	Fan cover	PP
9	Fan	PP-GF10
10	End plate	ADC12
11	Capacitor	
12	Cover box	PP GF20
13	Wiring base assembly	PC
14	Stator	
15	Filling plug	HPb59-1



Package Information

Model	GW (Kgs)	L (mm)	W (mm)	H (mm)	Quantity (PCS/20'TEU)
APm75H	11.5	335	190	220	1851
APm110H	16.25	370	210	235	1565

